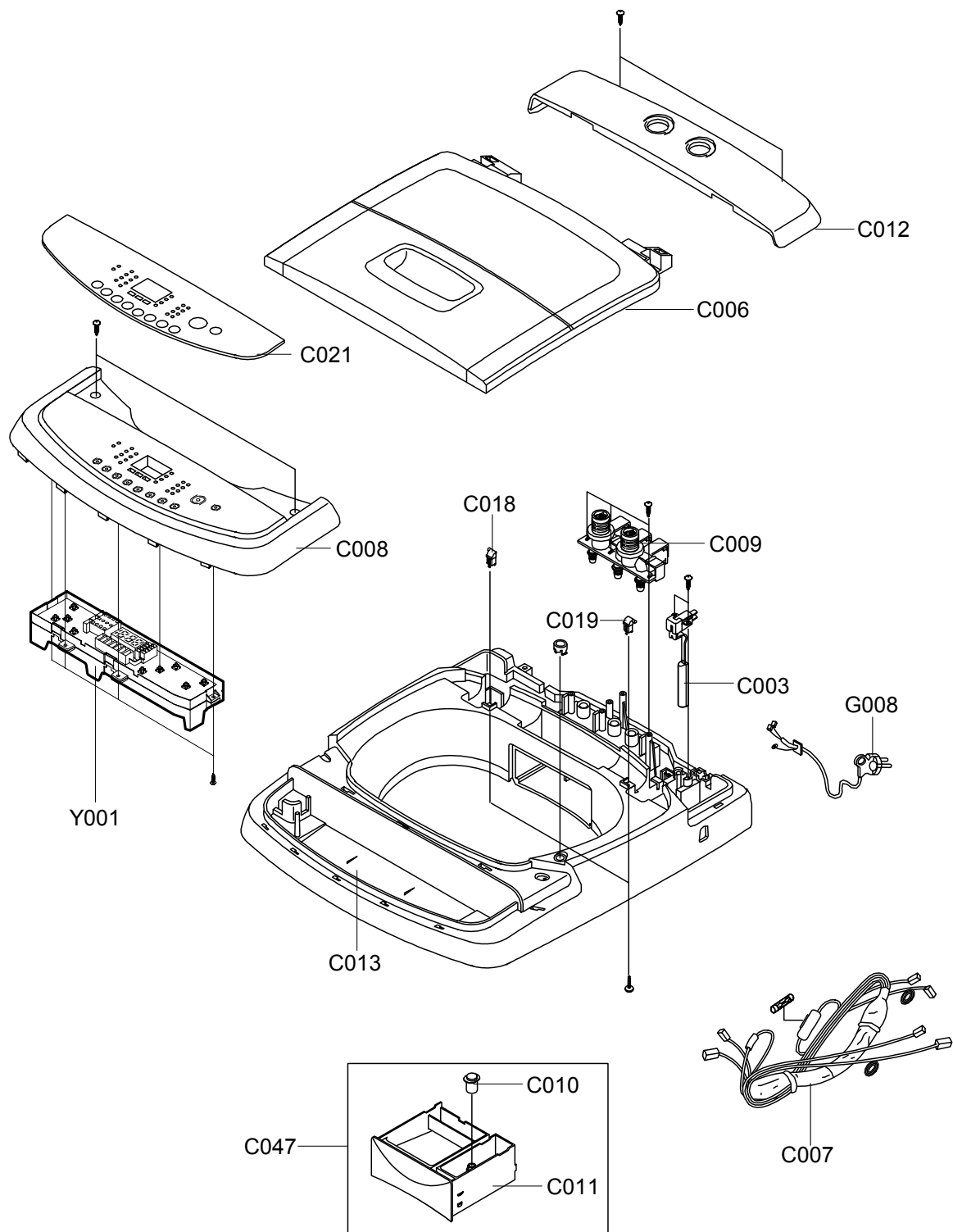
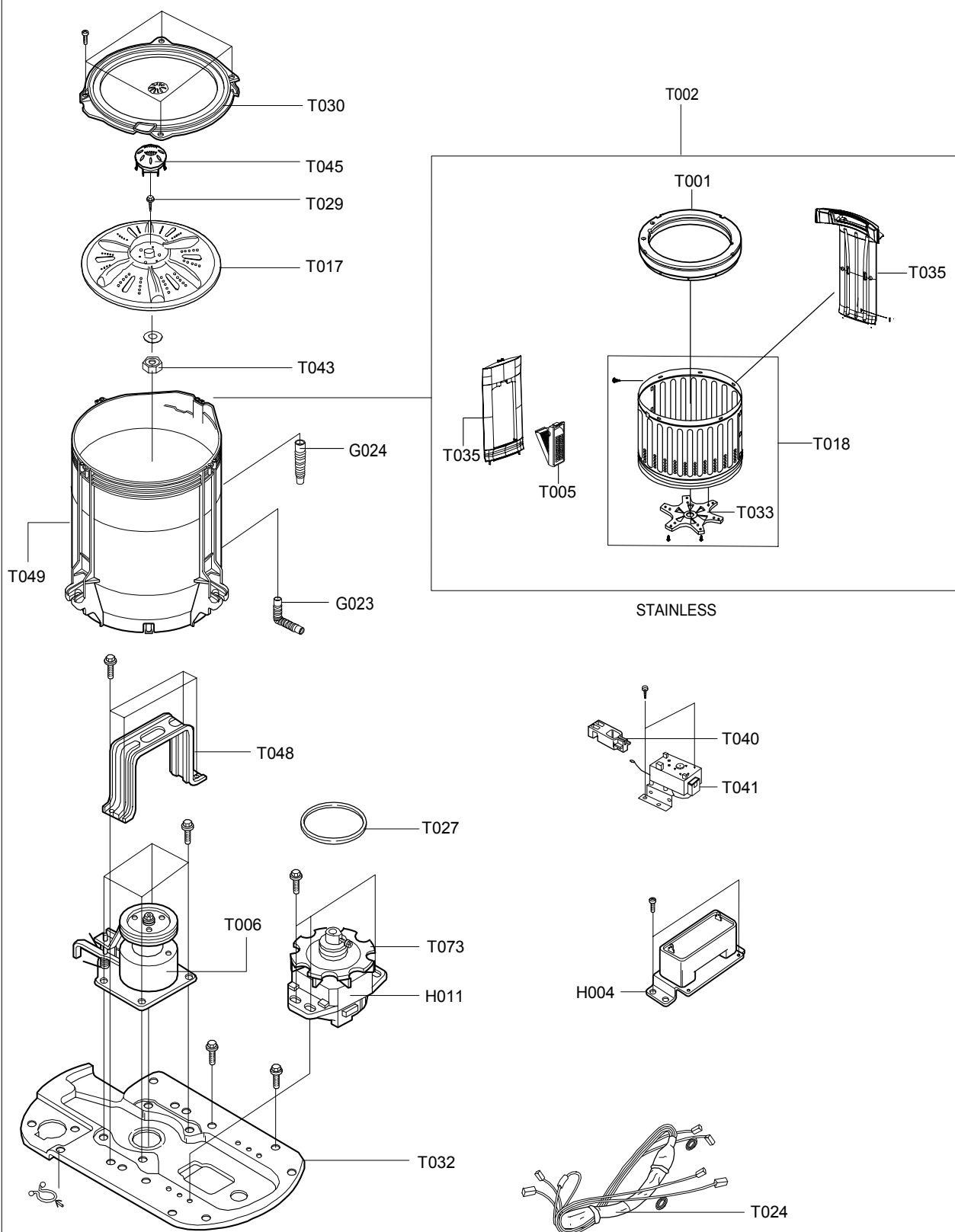


7. EXPLODED VIEW & PARTS LIST

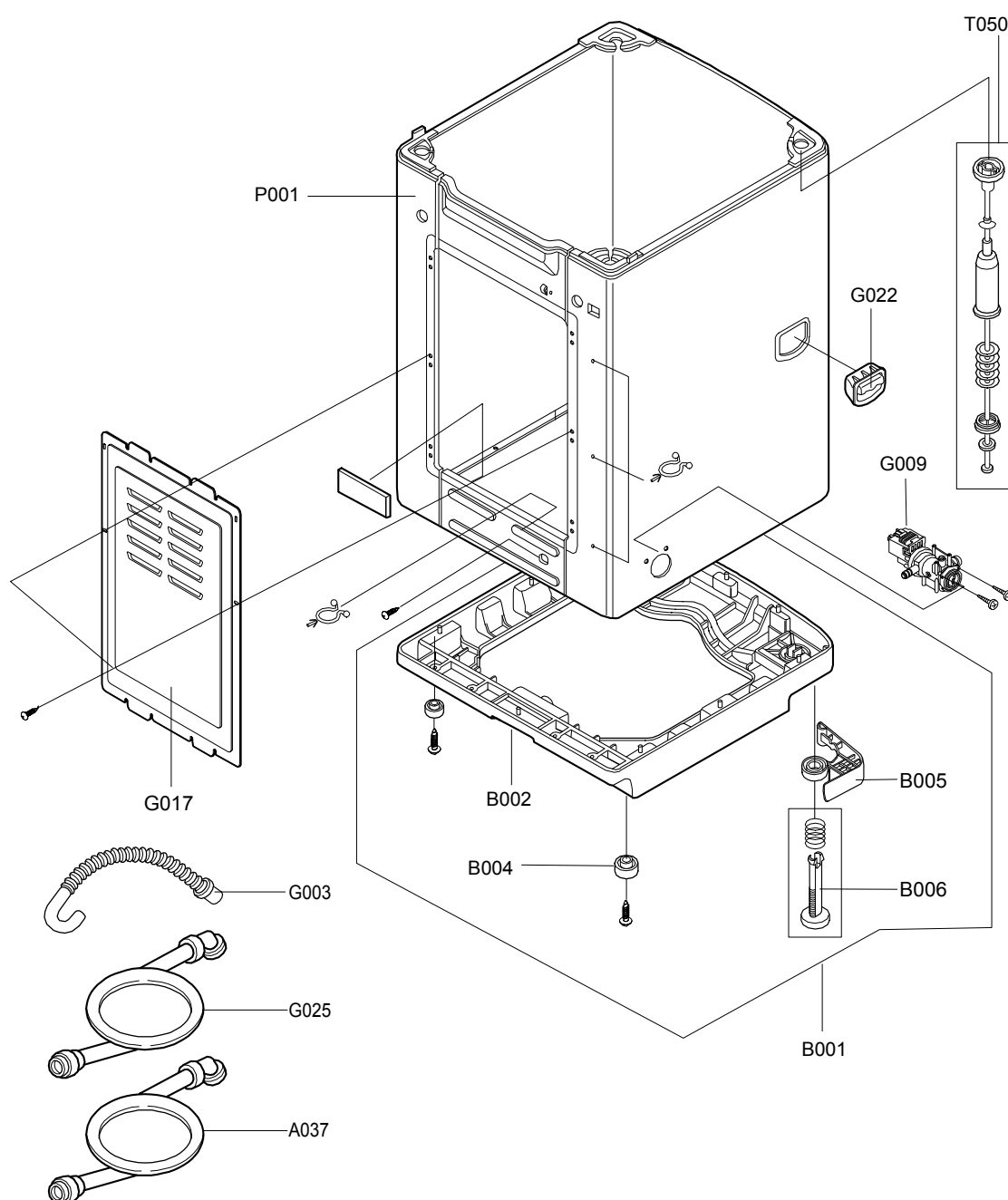
ASSY-COVER TOP



ASSY-TUB OUTER(SPIN BASKET)



ASSY-CASE OUTER



Parts List

NO.	CODE NO.	DESCRIPTION;SPECIFICATION	Q'TY
B001	DC97-00287E	ASSY-BASE;WA1635D0,PUMP(13KG)	1
B002	DC61-30333A	BASE;PP,SEW-X13,-,	1
B004	DC61-50167A	LEG-RUBBER;BUTYL,10KG/12KG,D29(BACK)	2
B004	DC61-50166A	LEG-RUBBER;BUTYL,10/12KG,D41(FRONT)	2
B005	DC61-50164A	LEG-LEVER;FRPP,SEW-X10,-	2
B006	DC91-11795D	ASSY-LEG;SEW-D107,RUBBER-LEG+ADJUST	2
C003	DC96-00351E	ASSY-CHECKER S/W;PM100C,STANDARD/CHINA	1
C006	DC97-06662A	ASSY-LID T.C;WA16R3Q3DW/XAP,T-PJT/S/WHT	1
C007	DC96-00737A	ASSY-M.WIRE HARNESS;WA14R3Q5DW/YE,TORNAD	1
C008	DC64-00697A	PANEL-CONTROL;WA15R3W,ABS,-,-,-,SNOW/W	1
C009	DC62-00024B	VALVE-WATER;SW12P1S,PP,-,-,GRY,3-WAY(110	1
C010	DC67-00080J	CAP-RINSE;SEW-3G100A,ABS,-,-,-,PEACOCK/G	1
C011	DC61-00105G	CASE-DETERGENT;WA1635D0,ABS,-,-,-,SNOW	1
C012	DC63-00484A	COVER-T.C;WA15R3W,ABS,-,-,-,SNOW/WHT	1
C013	DC63-00483A	COVER-TOP;WA15R3W,ABS,-,-,-,SNOW/WHT	1
C018	DC61-20175X	HINGE-DOOR(L);SW10C1SP,POM,-,-,-,-	1
C019	DC61-20175W	HINGE-DOOR(R);SW10C1SP,POM,-,-,-,-	1
C021	DC64-00748A	INLAY-PANEL;WA15R3R,PET,-,-,-,10KG	1
C023	DC32-30006Q	SENSOR PRESSURE;DN-S15,TERMINAL-TYPE(DC5	1
C024	DC61-00342A	SPRING-Q(L);KS-PJT,STEEL WIRE,CD1.8,-,-,	1
C025	DC61-00343A	SPRING-Q(R);KS-PJT,STEEL-WIRE,CD2.0,-,OD	1
C031	DC61-00584D	CAP-SCREW;TS85-PJT,SILICON,-,-,-,SNOW/WH	2
C047	DC97-00885R	ASSY-DETERGENT;WA1635D0,ABS(SNOW/WHT)	1
G003	DC97-00139C	ASSY-HOSE DRAIN(O);SW65ASP2/SW55APP2,PUM	1
G004	DC91-10229C	ASSY-HOSE WATER;1.0MT,MM(HOT)	1
G008	DC90-10079A	ASSY-POWER CORD;- ,125V/12A/EP2(P/L)	1
G009	DC96-00035J	ASSY-PUMP DRAIN;SW10K1SP,110~120V/60HZ	1
G017	DC61-10571B	COVER-BACK;- ,SBHG1-A,-,-,-,EDGE-BEND	1
G022	DC61-20209P	HANDLE;SW12E1SP,PP,-,-,-,SNOW/WHT,-	2
G023	DC62-10292A	HOSE-DRAIN;- ,EPDM,-,-,-,L282,BLK,SW90V2P	1
G024	DC62-10022J	HOSE-PUMP;SW65ASP,PP(BB110),ID21.5,OD26,	1
H004	DC62-00091C	CONDENSER-M.F;L92,W37,-,H39,WHT,250VAC/4	1
H011	DC31-10026J	MOTOR-WASHING;PWS360WSEA,120V50/60Hz,-,-	1
P001	DC99-00148A	ASSY-PAINT;WA1334DODW,SNOW/WHT(PUMP)	1
T001	DC97-01806A	ASSY-BALANCER;SEW-SA101E,KS-PJT	1
T002	DC97-03224B	ASSY-BASKET SPIN;SEW-P130A,WIDE/2-FALL	1
T005	DC97-00252E	ASSY-FILTER;8/10KG,ABS/EUN BI	2
T006	SCA-10RPHW03	ASSY-CLUTCH;SCA-10RPHW03(SEM-10T)	1
T017	DC97-06551B	ASSY-PULSATOR;WA16R3Q3DW/XAP,T-PJT(3D)/S	1

Parts List

NO.	CODE NO.	DESCRIPTION;SPECIFICATION	Q'TY
T018	DC91-10130C	ASSY-S.BASKET SPIN;SEW-P100A,2-FALL	1
T024	DC96-00743A	ASSY-WIRE HARNESS;TORNADO-PJT,10T/PUMP/1	1
T027	DC66-10170B	BELT-V;RUBBER,M21.6,L596,SEW-950,-	1
T029	DC60-40133A	BOLT-PULSATOR;M8,L25,-,STS 304	1
T030	DC63-00251A	COVER-TUB;SEW-P130A,PP(TB53),-, -, -, -, -, S	1
T032	DC61-70061B	DIE-MOTOR;SEW-M103,SBHG1-A,-, -, -, SEM-10T	1
T033	DC60-00023A	FLANGE-SHAFT;PT-PJT,ALDC,-, -, -, -, -, -	1
T035	DC61-00586A	GUIDE-W.F;PT-PJT,PP,-, -, -, -, STS-TYPE	2
T040	DC66-30024A	LINK-DRAIN;PP,L66.5,SEW-PB10	1
T041	DC31-20014C	MOTOR DRAIN;KD-SM11TA,100~120V,50~60HZ(B	1
T043	DC60-50004A	NUT-SPIN;- ,ZNDC1,M24,-, -, L14,-, -, CW	1
T045	DC66-00349A	PULSATOR-CAP;TORNADO-PJT,ABS,OCEAN-GRN,-	1
T048	DC61-40238A	SUPPORT-SADDLE;SEW-V10,SBHG1-A,-, T1.6,-, ,	1
T049	DC61-30094B	TUB-OUTER;- ,PP(BJ-730),-, -, NTR,SEM-10T(1	1
T050	DC97-00469F	ASSY-DAMPER;SW12E1SP,FRONT	2
T050	DC97-00469G	ASSY-DAMPER;SW12E1SP,REAR	2
T073	DC90-11070E	ASSY-PULLEY MOTOR;SEW-100,-	1
Y001	MFS-T1TT20C-09	ASSY PCB PARTS;MFS-T1TT20C-09	1

BOLT/SCREW Parts List

CODE NO.	DESCRIPTION	SPECIFICATION	Q'TY
6002-000473	SCREW-TAPPING	TH,+,1,M4,L14,-,STS304	2
6002-001306	SCREW-TAPPING	TH,+,1,M4,L14,ZPC(YEL)	.
6002-001006	SCREW-TAPPING	TH,+,2S,M4,L12,-,STS410	2
6002-001006	SCREW-TAPPING	TH,+,2S,M4,L12,-,STS410	2
6002-001306	SCREW-TAPPING	TH,+,1,M4,L14,ZPC(YEL)	2
6002-001306	SCREW-TAPPING	TH,+,1,M4,L14,ZPC(YEL)	5
6002-001307	SCREW-TAPPING	TH,+,1,M5,L16,PASS	2
6002-001308	SCREW-TAPPING	TH,+,1,M5,L20,ZPC(YEL)	2
DC61-00584D	CAP-SCREW	TS85-PJT,SILICON,-,-,-,SNOW/WHT,-	2
6002-000445	SCREW-TAPPING	TH,+,2S,M4,L18,NTR,STS304	1
6002-001204	SCREW-TAPPING	TH,+,1,M4,L16,PASS,STS304	3
6002-001306	SCREW-TAPPING	TH,+,1,M4,L14,ZPC(YEL)	2
DC32-30006Q	SENSOR PRESSURE	DN-S15,TERMINAL-TYPE(DC5V)	1
6002-000630	SCREW-TAPPING	PH,+,2S,M3,L8,ZPC(YEL),SWRCH18	2
6002-001160	SCREW-TAPPING	TH,+,2,M5,L16,PASS,STS430	4
6002-001313	SCREW-TAPPING	HWH,+,2S,M6.5,L25,ZPC(YEL)	4
DC60-00006A	WASHER-WAVE	STS301,ID24.7,OD40,T0.8,WAVE,NTR,-	1
DC60-00012A	WASHER-PLAIN	STS304,ID24,OD37,T3.0,PLAIN,-,SEM-NEW	1
DC60-40133A	BOLT-PULSATOR	M8,L25,-,STS 304	1
DC60-50004A	NUT-SPIN	-,ZNDC1,M24,-,-,L14,-,-,CW	1
DC02-10009A	CHEMICALS-LOCK SCREW	NO2,-,-,-	0.0008
DC60-40007A	BOLT-HEX	SM18C,HH,M6,L22,FP,ZPC2,-,-	1
DC60-50152A	NUT-HEX	3,M6,FZY,FE,-	1
6031-000554	WASHER-PLAIN	M6,ID6.5,OD26,T2.0,ZPC(YEL),SB	1
6002-001006	SCREW-TAPPING	TH,+,2S,M4,L12,-,STS410	12
6002-001186	SCREW-TAPPING	TH,+,2,M5.5,L16,PASS,STS304	10
6002-001188	SCREW-TAPPING	TH,+,2,M5.5,L25,PASS,STS304	6
DC97-04458A	ASSY-SCREW	M8*22FE/FZY,WITHOUT LOCITITE	4
6002-000241	SCREW-TAPPING	TH,+,2S,M5,L12,ZPC(YEL),SWRCH18A	2
6002-001306	SCREW-TAPPING	TH,+,1,M4,L14,ZPC(YEL)	1
6002-001306	SCREW-TAPPING	TH,+,1,M4,L14,ZPC(YEL)	1
6002-001308	SCREW-TAPPING	TH,+,1,M5,L20,ZPC(YEL)	2
6002-001313	SCREW-TAPPING	HWH,+,2S,M6.5,L25,ZPC(YEL)	9
6002-000445	SCREW-TAPPING	TH,+,2S,M4,L18,NTR,STS304	3
DC02-10009A	CHEMICALS-LOCK SCREW	NO2,-,-,-	0.000111
DC60-50145A	NUT-HEX	-,MSWR10,-,-,-,-,M10	1
DC60-60046A	WASHER-SPRING	-,,-,-,-,PVC/PEFILM	1
DC60-60060A	WASHER	-,T2,-,ID12,OD24,-,YEL,-	1
DC60-00012A	WASHER-PLAIN	STS304,ID24,OD37,T3.0,PLAIN,-,SEM-NEW	1
6031-001271	WASHER-PLAIN	C5191P,-,ID12.5,OD19,T0.25,YEL	1
DC60-60032A	WASHER-B.C	-,ID14.5,OD21.0,T0.5,-,MSWR10	1
DC60-60038A	WASHER	-,ID12.5,OD18,-,-,-	2
6021-000289	NUT-HEXAGON FLANGE	2C,M6X5,ZPC(YEL),MSWR10	1
DC60-60181A	WASHER-BOLT	-,,-,-,-,C2800P	1
6021-000258	NUT-HEXAGON	3C,M5,ZPC(YEL),MSWR10	1
DC60-40018A	BOLT-HEX	M8,-,ZPC2,FE	1
6002-000239	SCREW-TAPPING	TH,+,2S,M4,L8,ZPC(YEL),SM20C	2
6002-000470	SCREW-TAPPING	TH,+,1,M4,L10,ZPC,SCRCH18A	9
6006-001170	SCREW-ASSY TAPP	WS,TH,+,M4,L10,ZPC(YEL)	2



ELECTRONICS

This Service Manual is a property of Samsung Electronics Co.,Ltd.
Any unauthorized use of Manual can be punished under applicable
International and/or domestic law.

©Samsung Electronics Co., Ltd. November. 2003
Printed in Korea
Code No. : DC68-02019A